

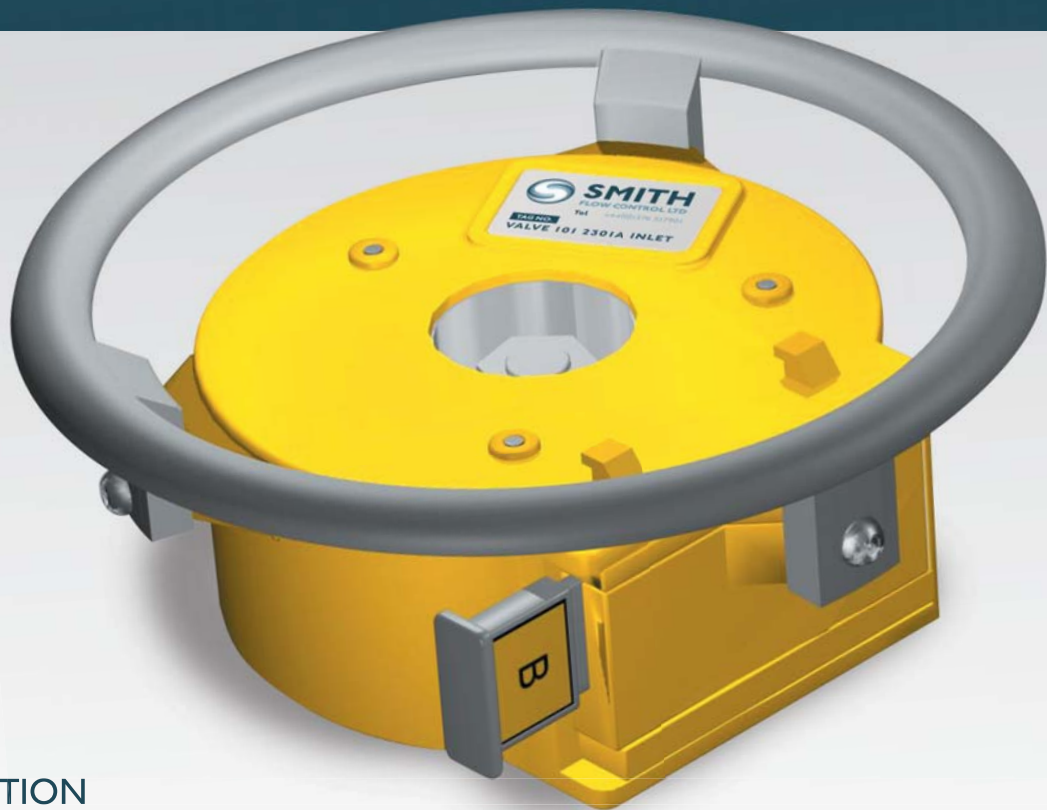


SMITH
FLOW CONTROL LTD

SFC KEY INTERLOCKS & PROCESS MANAGEMENT SYSTEMS



ATL (ANTI-TAMPER LOCK)



INTRODUCTION

Many valves on site require a simple to use locking device to prevent accidental or unauthorised operation.

CONSTRUCTION

ATL is available in two sizes covering all valve sizes and is available in 316 Stainless Steel. For remote unmonitored or higher security risk areas, a carbon steel, case-hardened option is available, which will withstand the toughest forms of vandalism.

CODING

The units can be uniquely coded or coded alike, dependant on operational conditions/ requirements.

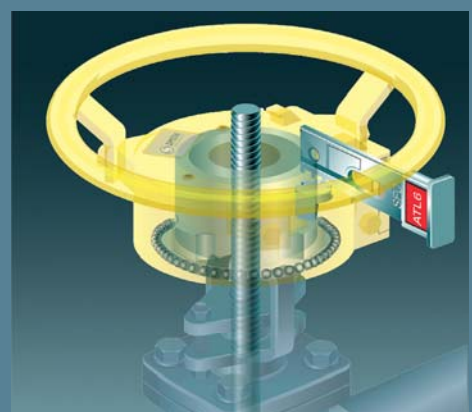
OPERATION

With the unit fitted to the valve, the standard SFC tamper-proof coded card key can be inserted allowing valve operation. Depending on operational requirements, the valve can be operated to any position, once the key has been removed, the unit free wheels - preventing valve operation.

ORDERING

The units are available 'off the shelf' allowing customers to undertake the simple machining operation for fitting, thus reducing order times and offering an instant security/safety solution.

PRODUCT DETAILS



Many valves on site require a simple to use locking device to prevent accidental or unauthorised operation.

The ATL has been developed to fit directly to valves in place of the normal handwheel or operating lever, with little machining which can easily be undertaken by the customer.



Smith Flow Control Ltd
6 Waterside Business Park
Eastways Industrial Estate
Witham Essex CM8 3YQ
United Kingdom

Tel: +44 (0)1376 517901

Fax: +44 (0)1376 518720

sales@smithflowcontrol.com

www.smithflowcontrol.com